

HCLSoftware

HCL BigFix Enterprise for Federal

Delivering seamless security with
automated server management



HCL BigFix

Leaders require intelligent automation technology that accelerates agility for business and IT, meets evolving security requirements, and ensures compliance with key industry standards—all within a unified offering. This comprehensive approach streamlines people, processes, and technology to drive operational excellence.

HCL BigFix Enterprise is a powerful infrastructure automation offering that allows U.S. federal agencies and departments to leverage automation, cybersecurity and analytical capabilities to proactively secure endpoints and remediate vulnerabilities in real time. It empowers IT leaders with a swift time-to-value, closing gaps and establishing a resilient, secure enterprise.

Ensuring continuous compliance and swift responses to IT incidents, BigFix offers extensive out-of-the-box (OOB) support alongside robust analytics and reporting capabilities. It stands out for its mastery of a unified solution, excelling in finding, measuring, and fixing a diverse range of IT and security use cases through meticulous fact-based analysis. It's the fastest solution for remediation, providing near real-time status for all endpoints. The platform also offers extensive customization capabilities for scripts, fixlets, tasks, and other elements, enabling precise alignment with organizational requirements.

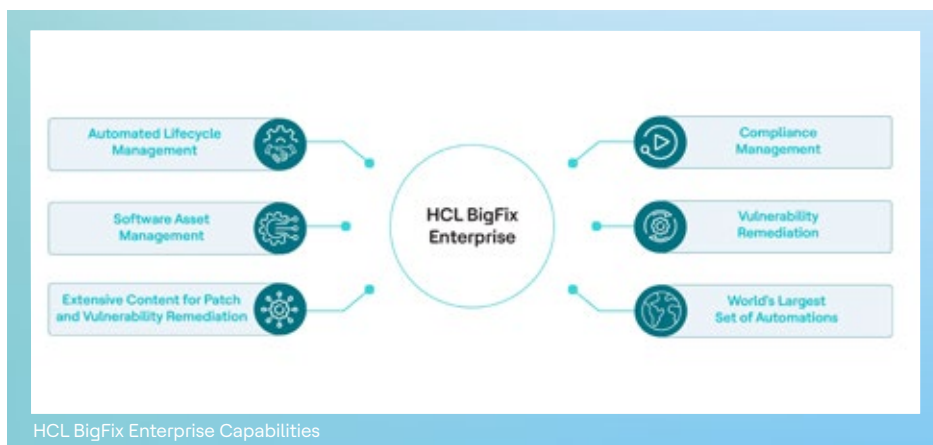
By automating routine tasks in IT infrastructure management, BigFix empowers IT and security leaders to concentrate on high-value activities, and enables leadership to make data-driven decisions, making it an indispensable asset for building a secure and efficient enterprise.

At a Glance

HCL BigFix Enterprise delivers a proven, reliable and cost-effective solution to manage and secure server infrastructures.

HCL BigFix Enterprise includes:

- Extensive repository of out-of-the-box automations
- Compliance management
- Extensive remediation content
- CyberFOCUS Security Analytics for vulnerability management
- Multiplatform patching
- Extensive patch content
- Server provisioning with OS deployment and software distribution
- Software asset management
- Remote desktop control
- Power management
- Fast endpoint query
- Device discovery
- Data analytics and reporting platform



HCL BigFix Enterprise Capabilities

Key Features

Vulnerability Management using CyberFOCUS Security Analytics

HCL BigFix CyberFOCUS Security Analytics helps organizations discover, prioritize, and patch critical vulnerabilities and reduce cybersecurity risk in real time to protect all your enterprise servers. It also supports collaboration between IT and security operations staff to improve endpoint security.

BigFix CyberFOCUS Security Analytics includes four essential tools:

Advanced Persistent Threat (APT) Simulator uses the latest threat data published through the MITRE ATT&CK® Framework.

CISA Known Exploited Vulnerability (KEV) Exposure Analyzer detects and helps remediate vulnerabilities listed in the CISA KEV Catalog.

Insights for Vulnerability Remediation integrates with Tenable and other industry-leading scanners to quickly correlate discovered vulnerabilities with available fixes.

Protection Level Agreement (PLA) collaboration tool creates and manages remediation agreements among stakeholders.

Remediation Content

Out-of-the-box content eliminates the time and effort required by IT to develop and test restorative remediations. HCL BigFix provides content for supported operating systems, third-party applications, middleware and databases. Remediation content is also provided for known exploited vulnerabilities in the CISA KEV Catalog.

Server Lifecycle Management

Server provisioning

Speed the deployment of operating systems and OS upgrades while leveraging centralized control and automation. HCL BigFix also supports bare-metal deployment of Windows, UNIX and Linux images to new systems. New imaging with advanced driver capabilities simplifies OS provisioning. HCL BigFix agent history is maintained across OS migrations and specialized registration mechanisms automatically reassigns

unique identities to duplicate agents resulting from image clones.

Once an OS is deployed, HCL BigFix can deploy and install required software, configuration policies and critical patches for seamless provisioning.

Server automation

HCL BigFix helps automate physical, virtual and remote server management while lowering operational costs with real-time, policy-based management.

It enables users to easily deploy and manage servers across heterogeneous platforms using either pre-built or custom automation.

The automated task sequencing capability can be used for critical tasks like server builds and complex patching operations with interdependencies between servers.

Multiplatform patch

Patch management includes the broadest operating system support for Windows, Linux and UNIX and hundreds of third-party applications, databases and middleware. HCL BigFix significantly reduces failed patch remediation time and patch cycles from days and weeks to hours or minutes.

With HCL BigFix, patching is effective even over low-bandwidth and globally distributed networks and real-time reporting provides detailed information on which patches were deployed, when they were deployed, who deployed them and confirms that patches were correctly applied.

Self service automation

IT Operators and system admins can leverage the HCL BigFix Self-Service Application on the server to launch common maintenance and self-healing tasks.

Device discovery

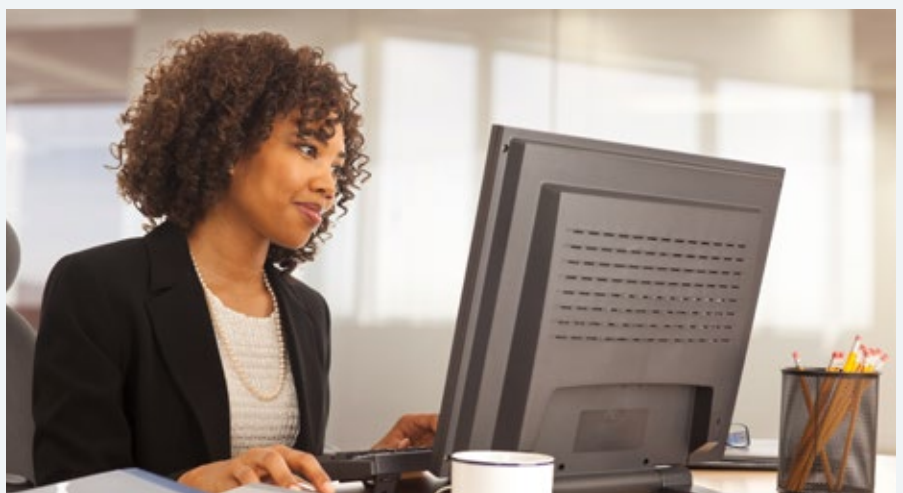
HCL BigFix creates dynamic situational awareness about all user endpoints connected to the network. IT staff can quickly identify all IP devices with minimal network impact enabling them to bring new endpoints under management or report rogue devices that may pose as security threat.

The Device Console, shown on the following page in Figure 2, depicts a typical heterogeneous server environment and allows IT staff to see and manage all managed devices across the enterprise including servers that are on-premise, in a cloud or running on virtualization platforms such as Nutanix.

Compliance Management

HCL BigFix helps organizations achieve and maintain **continuous compliance** with several industry and regulatory standards.

Using out-of-the-box checklists and thousands of checks, organizations can maintain continuous compliance with CIS, DISA STIG, HIPAA and others. An example is shown on the following page in Figure 1. Custom checklists can be created to satisfy specific organizational requirements.



Remote control

Remote desktop control is available to help IT Operations and system admins manage servers running Windows, Linux and UNIX, from anywhere. It enables management and troubleshooting of systems even across internet-brokered connections. Remote diagnostics and file transfer capabilities are tools for system administrators.

Power management

Power management helps reduce electricity usage and utility costs by automatically powering down servers that do not need to be running continuously, such as servers in development and test environments. The Wake-On-LAN capability helps improve patch success rates by being able to wake powered off servers.

Repository of Automations

HCL BigFix can be used to automate many routine actions and tasks but can also automate complex actions like patching middleware clusters. Over 500,000 automations are available, ranging from typical operator tasks such as restarting a system and remediation actions to restore a configuration setting that has been inadvertently changed.

These automations – also called BigFix Fixlets – are automatically delivered to your BigFix infrastructure

along with the ability to import additional automations from other users.

Fast Endpoint Query

HCL BigFix Query enables IT staff to obtain real-time status of all your infrastructure servers, enabling accurate identification and inspection of systems. It can also identify which policies are enforced and what software and services are installed.

HCL BigFix Query can inspect files, meta data and device settings to

identify additional security threats and which servers have a specific hardware type, etc. It can also verify whether remediation of endpoints was successful. It is a powerful tool to help bridge the gap between security and IT operations.

Inventory Management

Knowing what hardware and software assets are in your environment is often the first step in managing all servers across the enterprise. HCL BigFix can identify an organization's licensed and unlicensed software with drill-

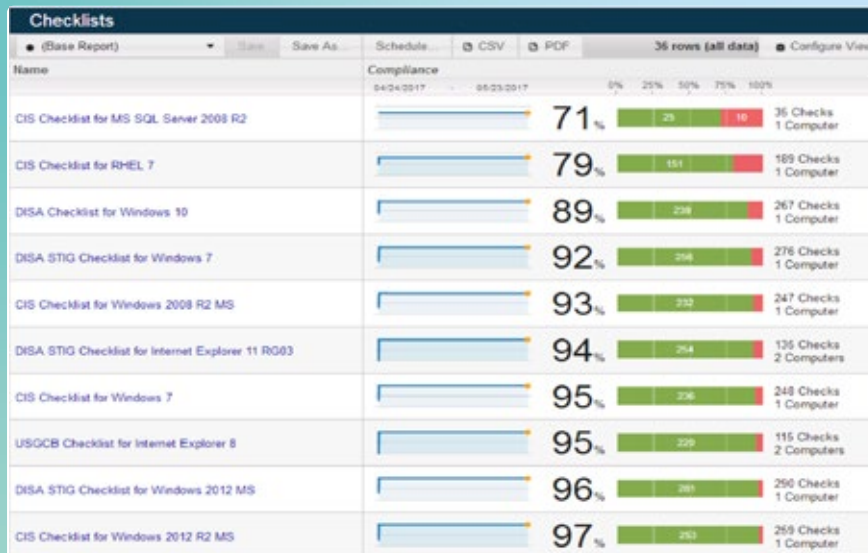


Figure 1 – Example Compliance Dashboard

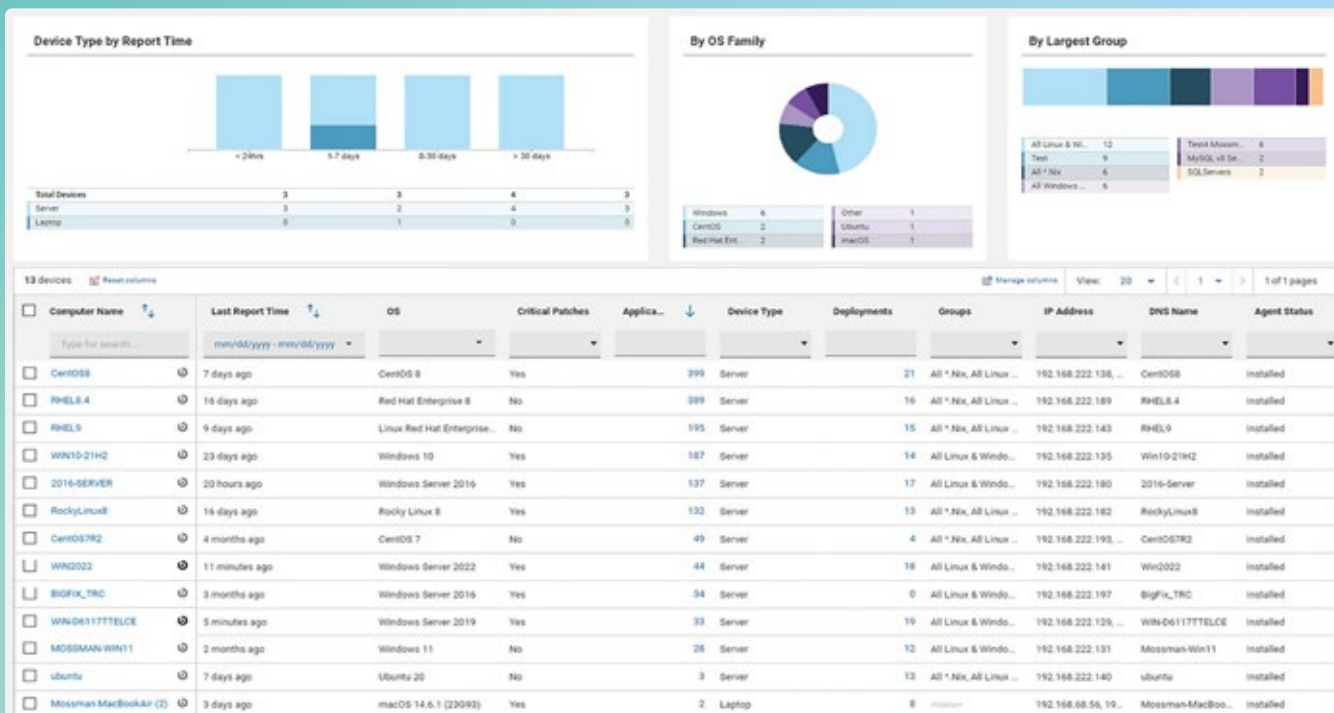


Figure 2 –HCL BigFix Device Console provides visibility to and control of infrastructure servers running Windows, Linux and UNIX.

